

NIRVAN WOODS



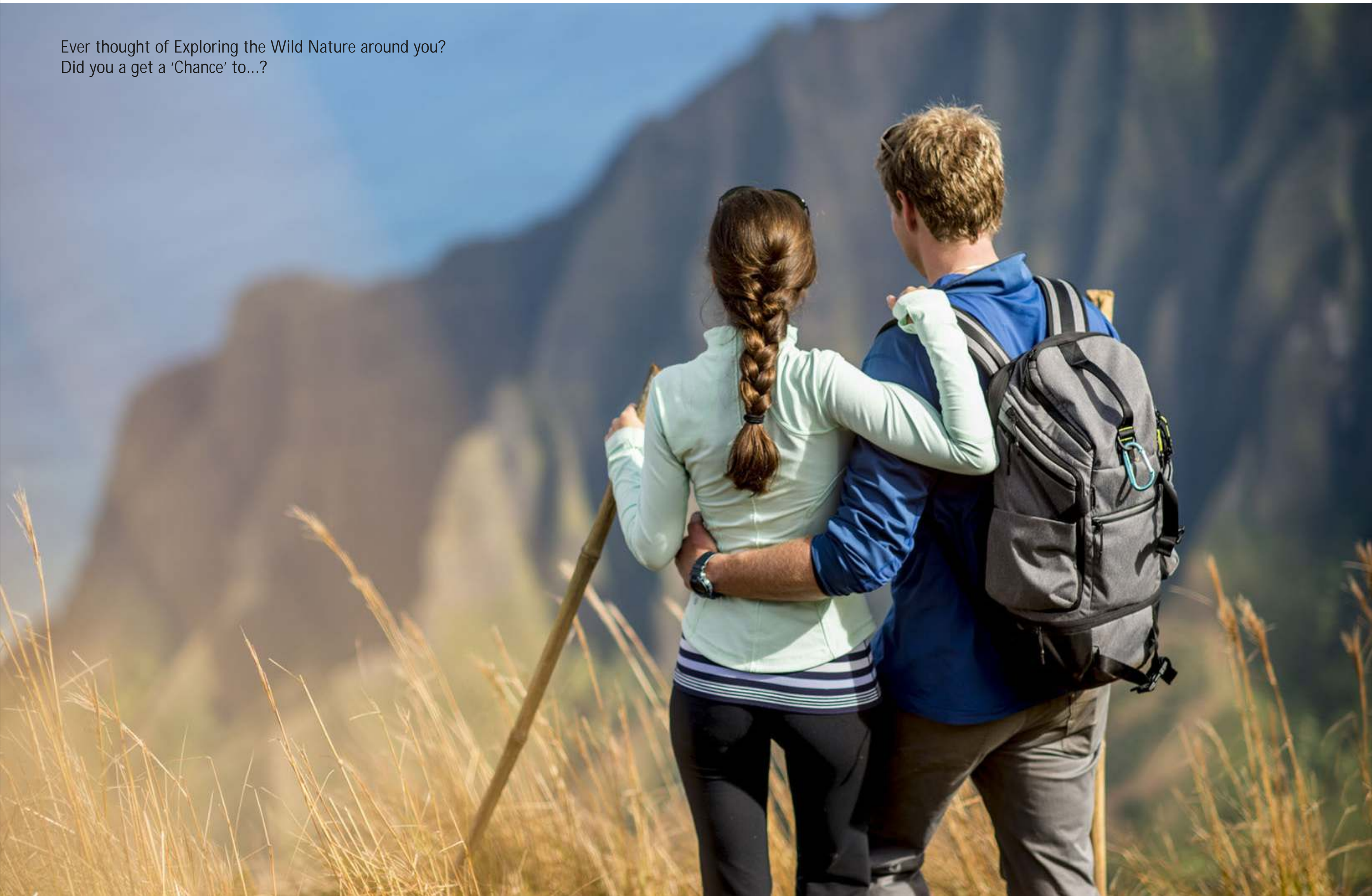
" Breathe in the air heavy with aroma of beautiful flowers, feel the grass moist with the last night's dew.

Stretch your legs and spread your arms gazing at the stars. Relish your own picturesque garden and behold the breathtaking views of the lush green mountains.

Flick the latest 3D TV and enjoy the movie. Live a life you have always aspired for.

A life full of exclusiveness when you want to be just yourself. Live where luxury surrenders at your feet."

Ever thought of Exploring the Wild Nature around you?
Did you a get a 'Chance' to...?



Ever stayed and Rejoiced in the Lap of Raw Nature...?
Wish you could do it 'Often'?





Welcome to blissful natural surroundings and ultra luxurious facilities in an environment free from the pollution of urban life.

Built not just by our architectural hands but also by our hearts to suit your styles of living.

Here you distinguish between existing and living... ...bridging between paradise and your home.

We bring you castles from the heavens to tuck away in and indulge in the presence of extreme serenity.

EXPLORE YOUR WORLD IN A WHOLE NEW IMAGE WITH US

Treasured castles – the ultimate in luxury, elegance, and serenity in a friendly and secure neighbourhood with excellently built, three unique magnificent structures to stun your soul.

A PLACE WHERE WE LEARN THE FIRST STEPS OF LIFE

The exquisite beauty and liveliness of Shimla is well known and experienced by many. But, most of us don't want to just 'experience' it for a small time, rather dwell in it - immerse their lives herein.

A marvelous destination of pleasure-full living amid the greens, fresh air and water, untouched by the chaos of the city - a lifestyle embarked upon pure air and healthy environment.

Traveling through the nature's beautifies had never been so easy as having a home in the heartland of the eternal nature.



Find your Home at a prime location in the “Queen of Hills” Shimla



A Green Abode

A perfect Residential & Star Hotel Development in the heart of Mountains

The Most Fashionable address in the City



As you enter Nirvana Woods, feel the enigma of Living your Life on a different note



Location Advantages

40 Minutes Drive from Shimla Airport to reach the site.

15 Minutes Drive to reach Mall Road Shimla from the site.

5 Minutes Drive to reach Inter State Bus Terminus Shimla from the site.

150 Minutes Drive from Chandigarh International Airport and Chandigarh Railway station to reach the site.

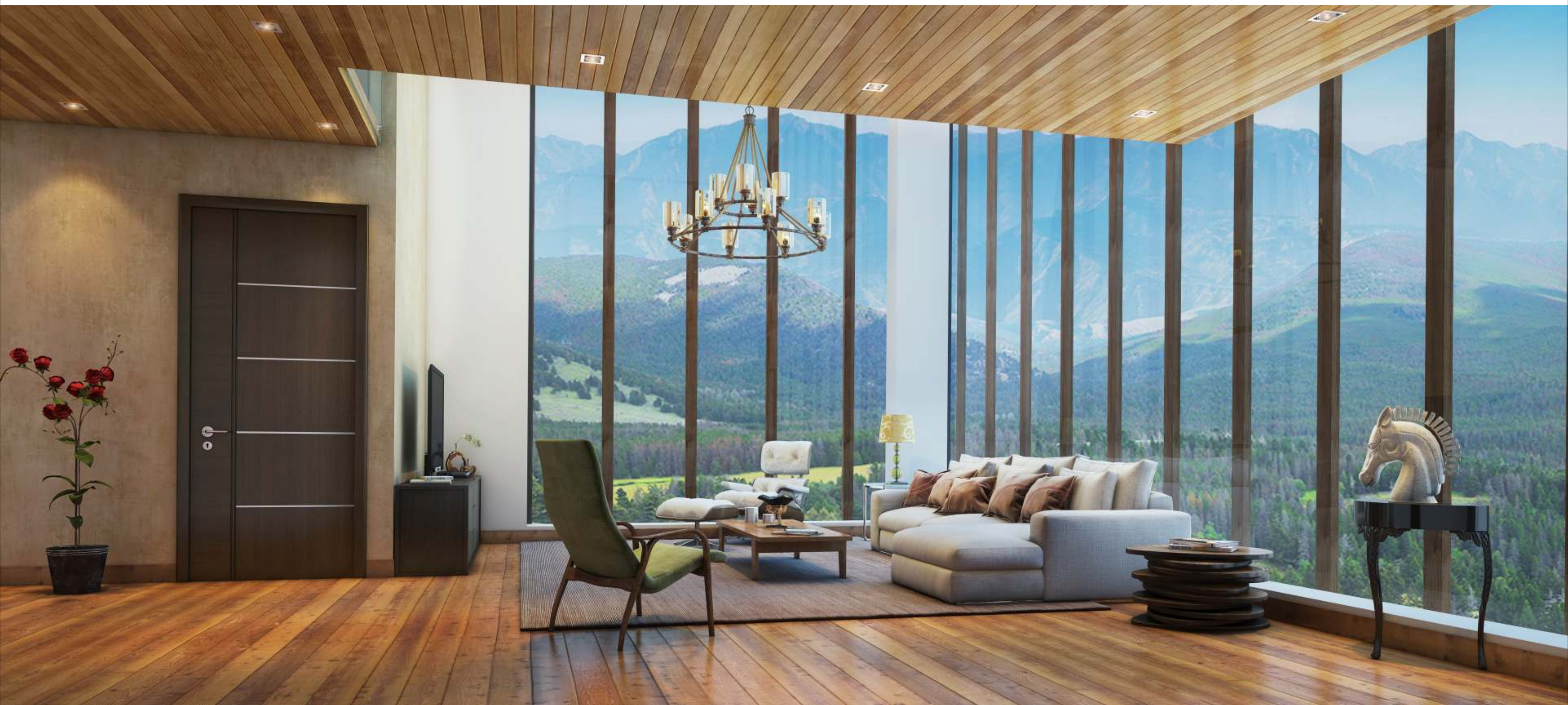
10 Minutes Drive from site to reach Tourist Information Centre Shimla on NH-22.

Proposed Cable Car to the Mall Road Shimla and Jakhoo Temple from Tourist Information Centre by Govt. of Himachal Pradesh.

Panoramic vistas. Spectacular Mountains and Lush Green Views



Every Villa at Nirvana Woods has been designed to command stunning views. Enjoy panoramic vistas of lush and spectacular Mountains view.



Elegant Living rooms with nothing separating you from nature,
but floor-to-ceiling glass walls.



Villa with unique design and personal lift facility.



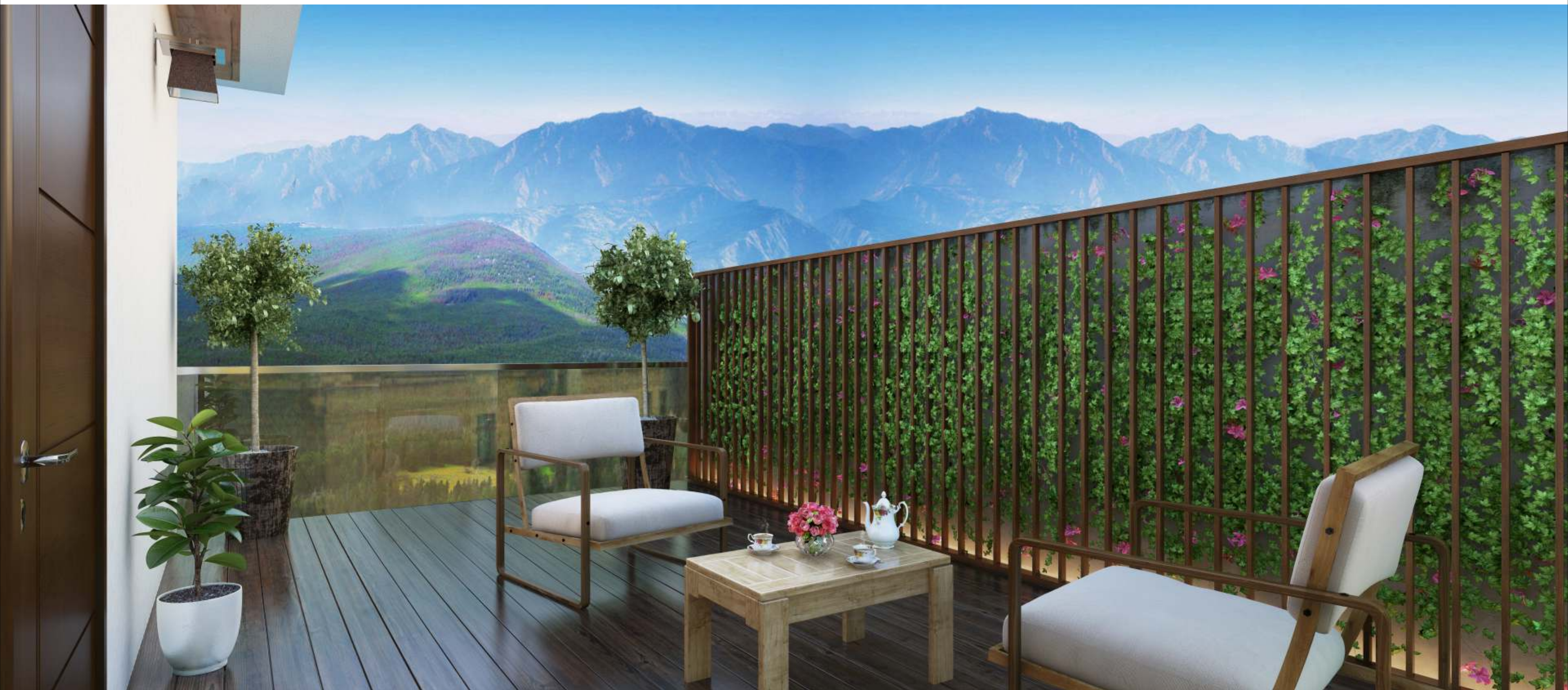
Home where incredible meals are prepared and enjoyed with incredible views.



Panoramic views of the open skies and hills from spacious Bedroom.



At the end of a busy day, bathrooms create a retreat from the world, and also offer the privacy and comfort to the extreme.



It's not just a terrace infact its a gateway to Himalayan ranges and cedar forest.



A separate Entry for Hotel to have more Freedom and Exclusivity



Shimla's many moods are reflected in crisp winter skies, the fragrance of cedar forest in summers, the romantic mist of the monsoon and the golden hillside of autumn. Each of these seasons can be experienced in the comfort and gracious service of Nirvana Woods Hotel.



The lounge and the restaurant are the perfect settings for a quiet aperitif or for fine dining.



A snooker table also solves the problem of wondering what to do on a rainy day.

NIRVANA WOODS HOTEL:
Because exclusively is just your style

- Private concierge
- State-of-the-art-gym
- Restaurant
- Exclusive access to the stunning pool
- Exclusively for residents of Nirvana

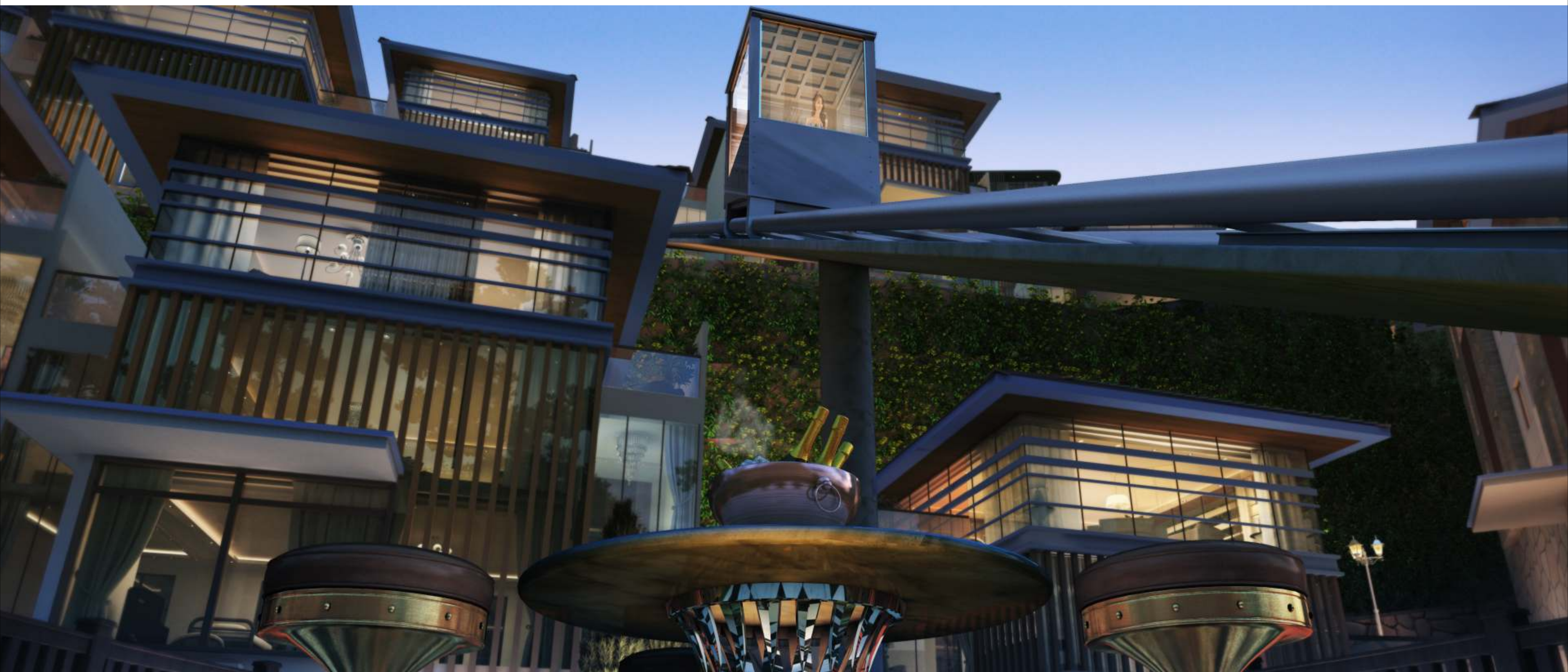
Spend your leisure time Relaxing in a pool, while looking at Scenic Views outside



A snooker table also solves the problem of wondering what to do on a rainy day.



Natural Water Feature preserved, with a little 'architectural touch' for a class Lifestyle



A living experience so fashionable, even the ----- makes a statement